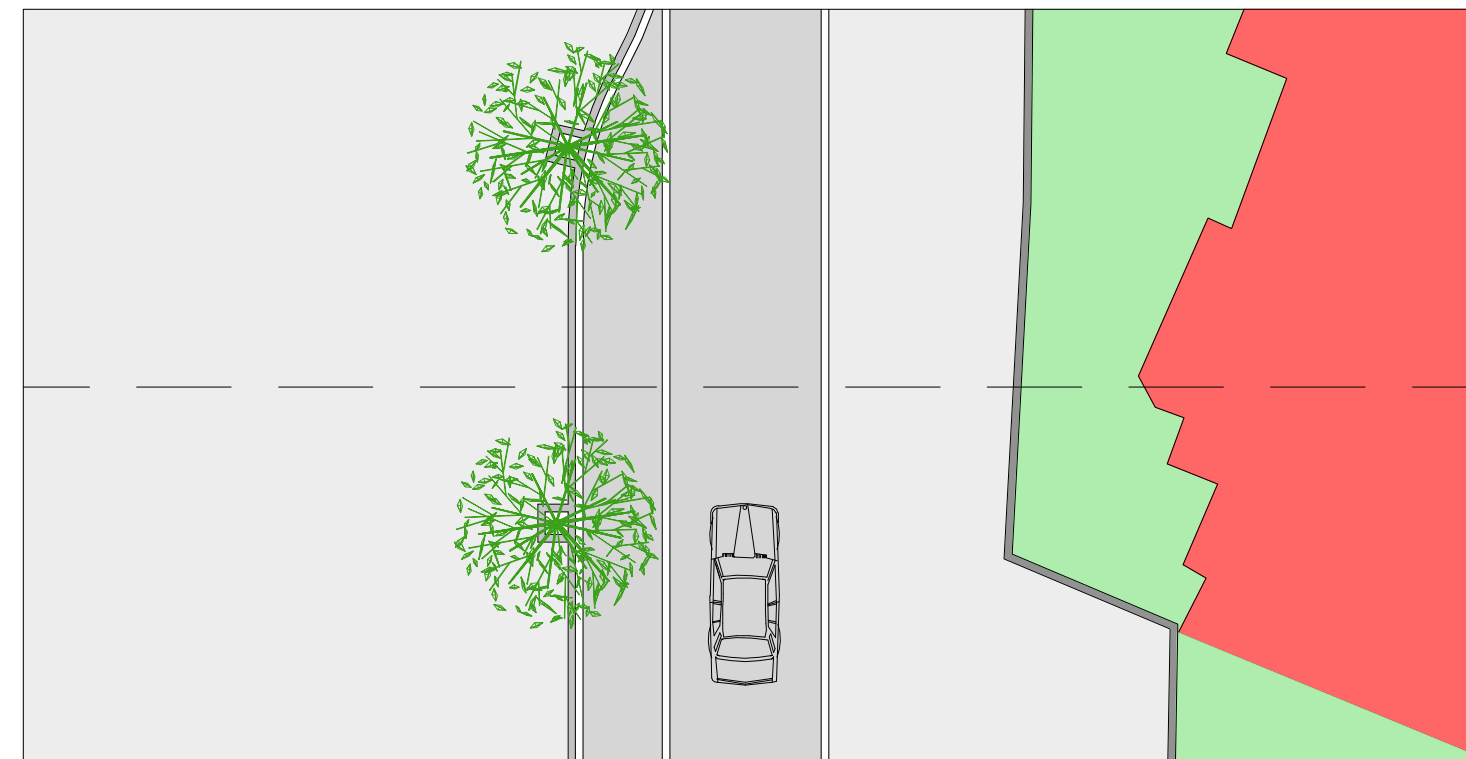
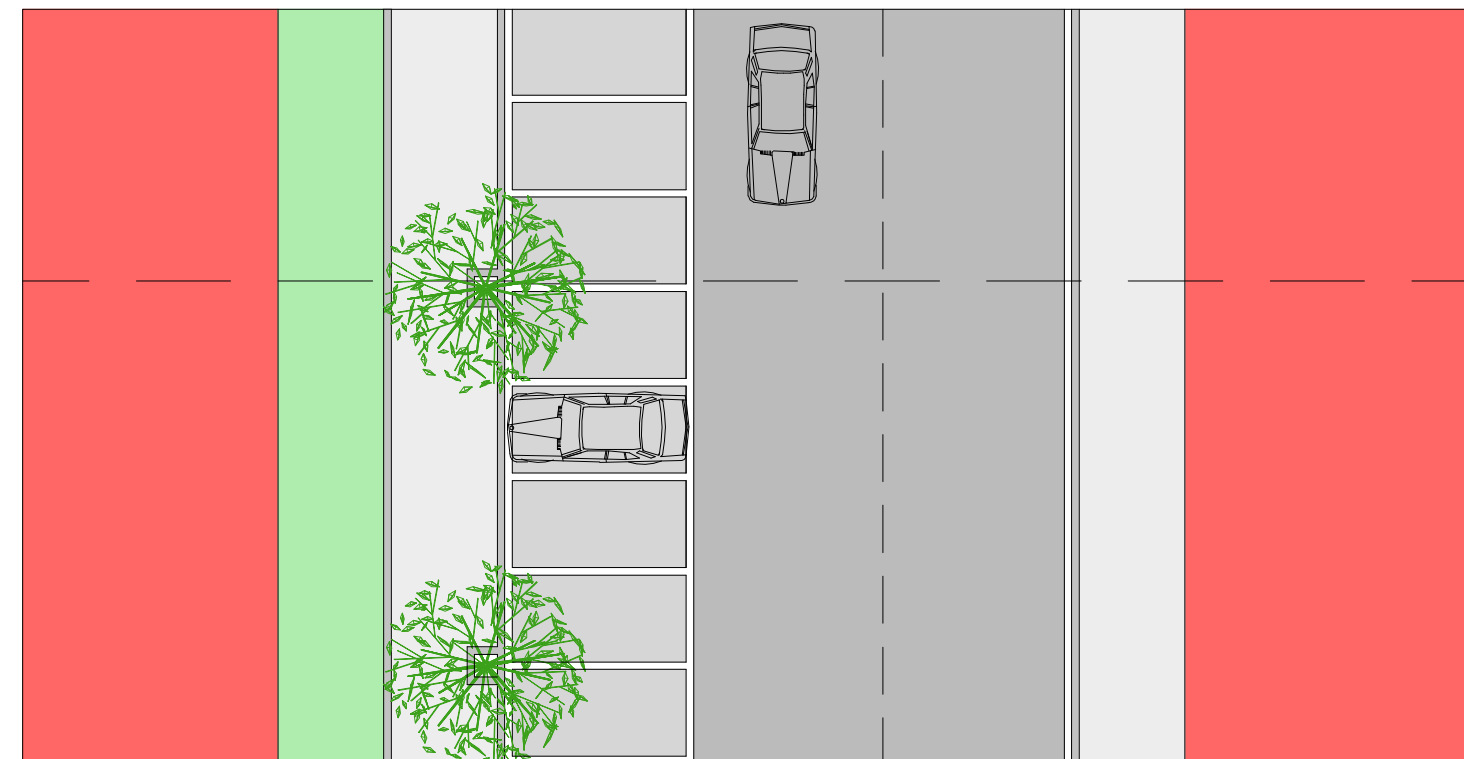


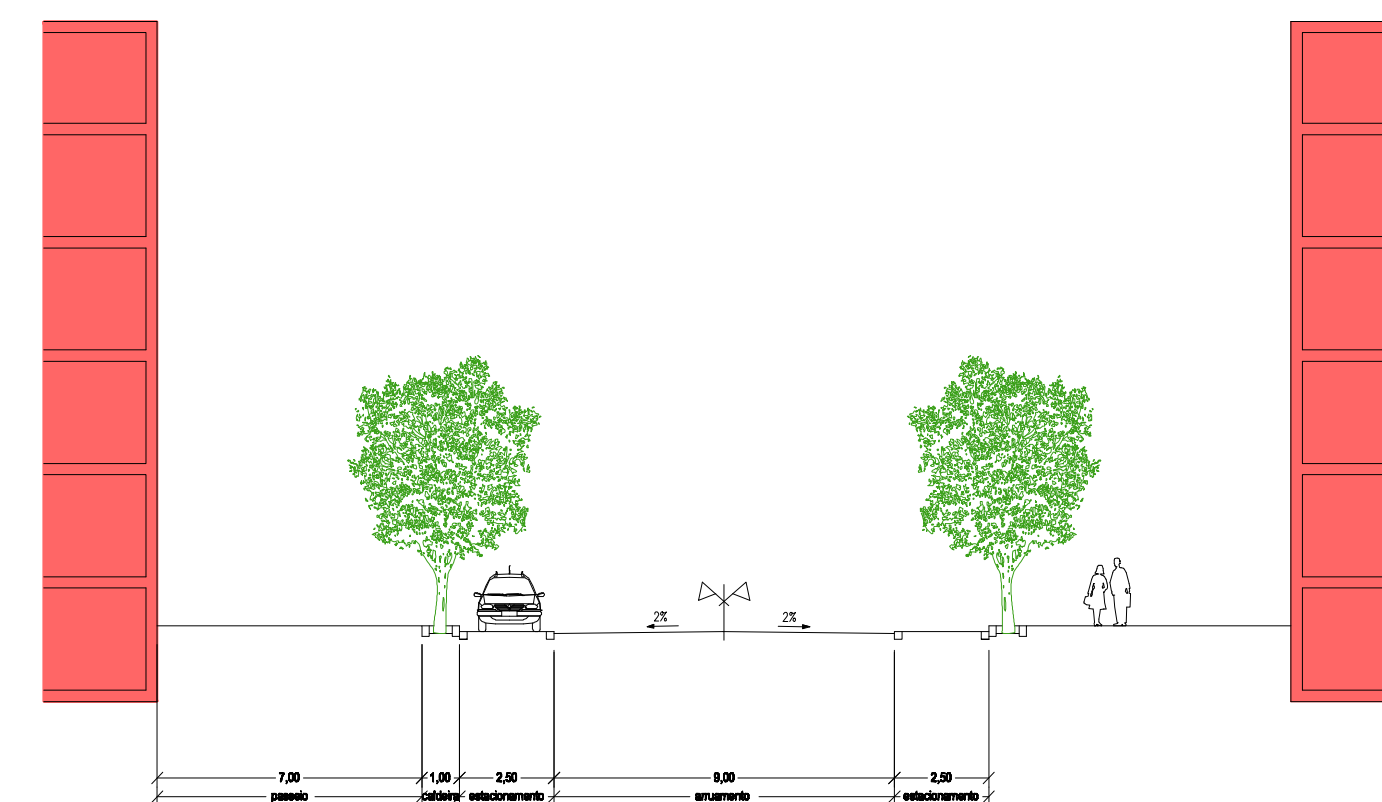
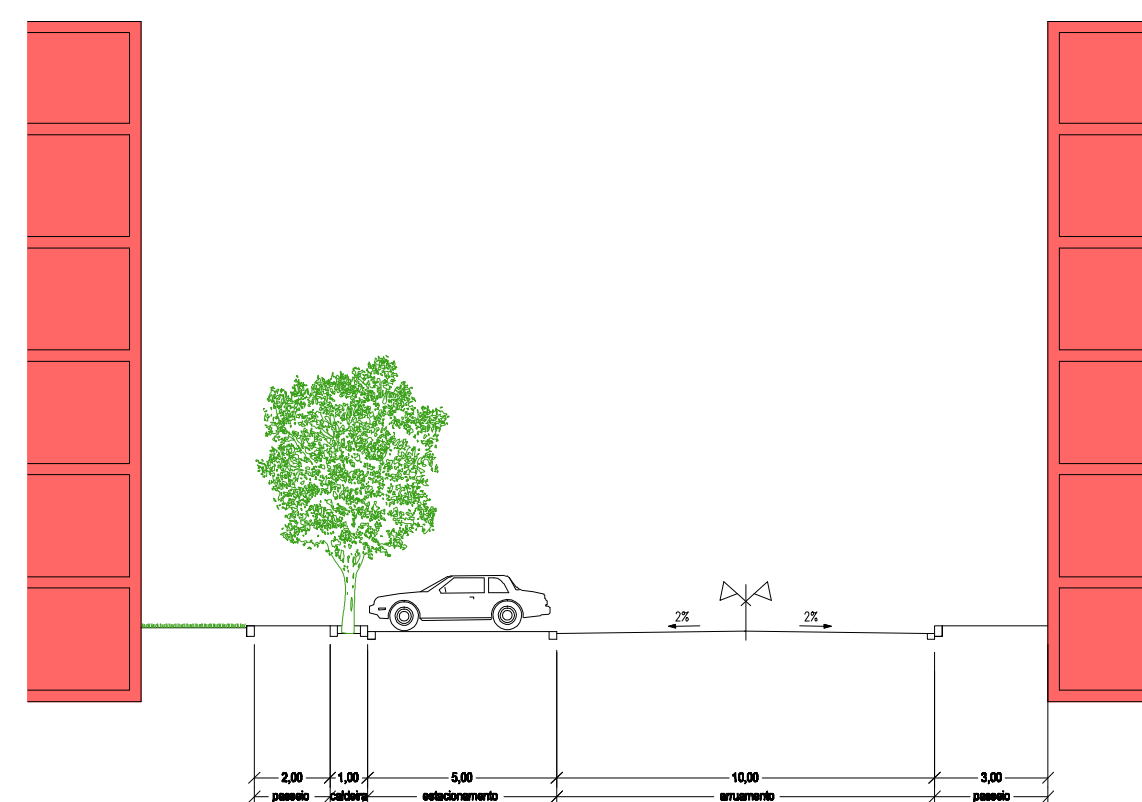
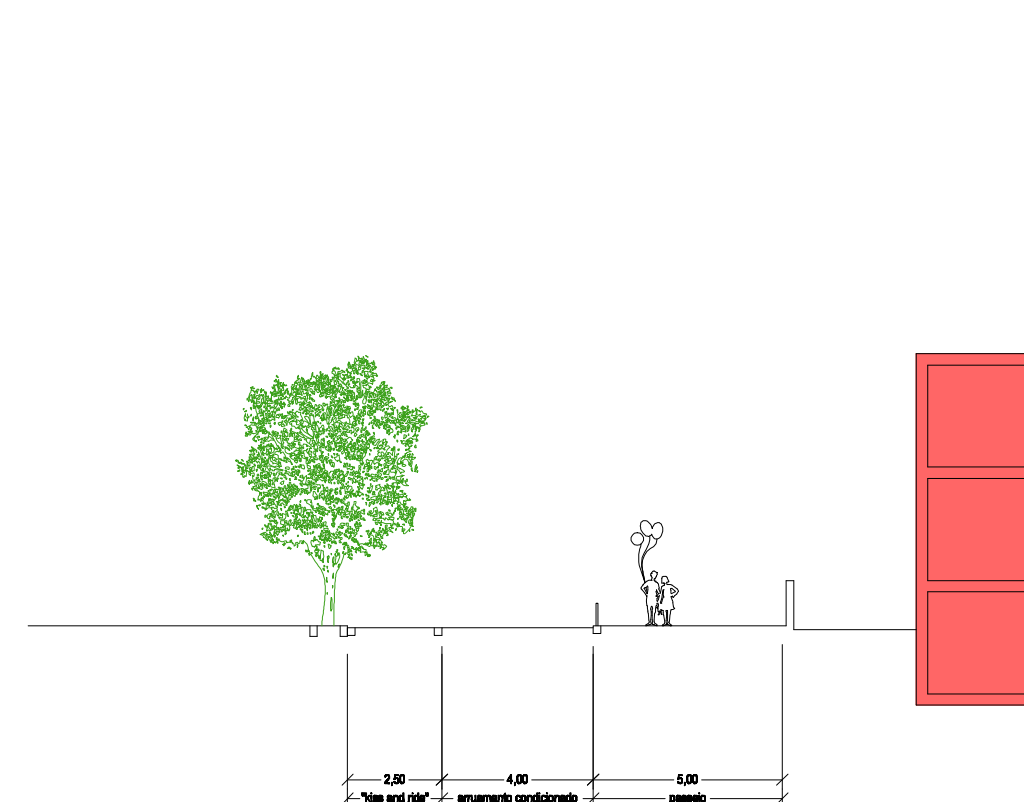
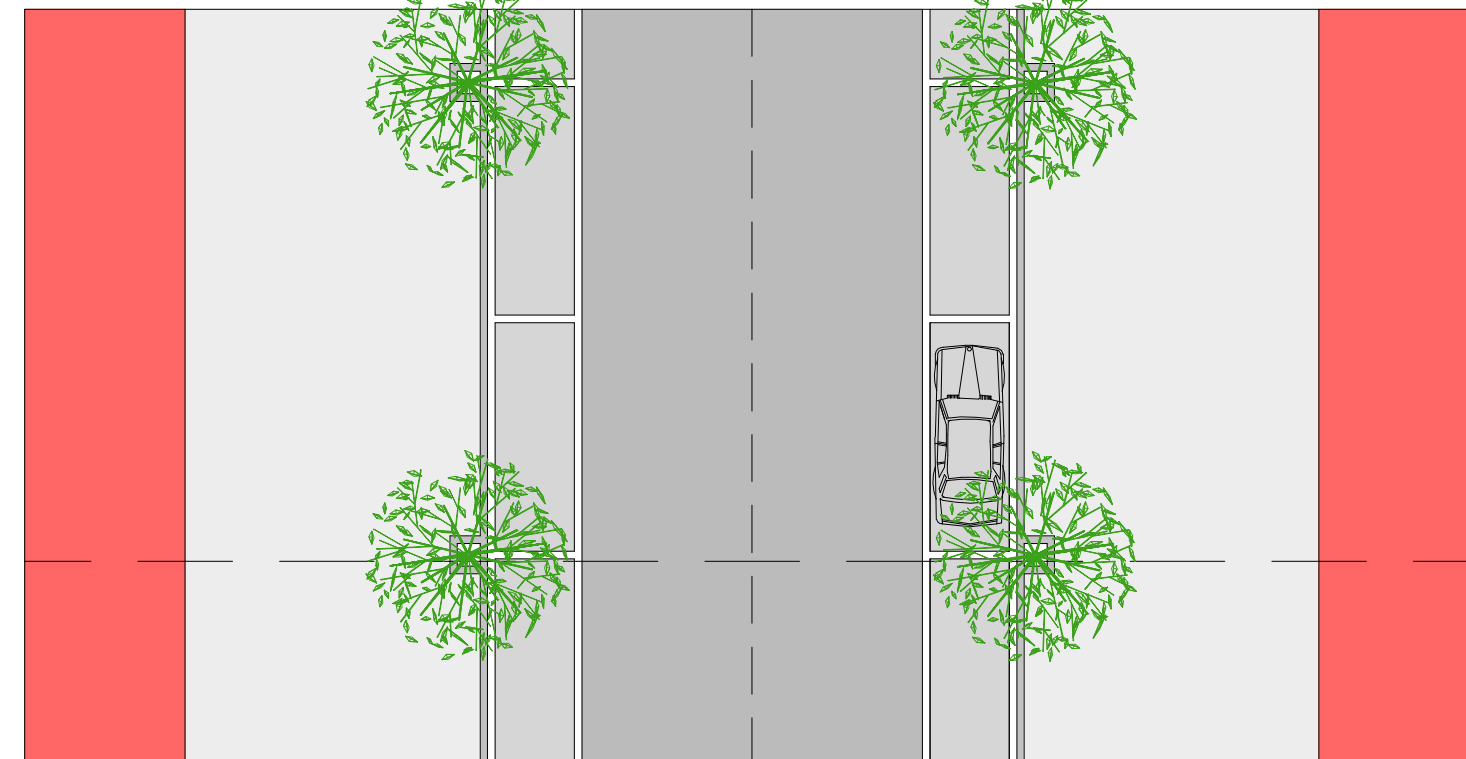
PERFIL A-A1



PERFIL B-B1

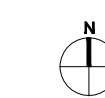


PERFIL C-C1



PLANO DE PORMENOR DA QUINTA DA PÍCUA E ÁREAS ENVOLVENTES

PERFIS TRANSVERSAIS TIPO



CÂMARA MUNICIPAL DA MAIA

Gestão Integrada de Projectos e Planeamento, Lda
 Estrada Exterior da Circunvalação, 3846-1º, Sala 5
 Área - 4435 Rio Tinto
 Email: gip@gpp.pt
 tel. 229773900 Fax: 229773909

PROPOSTA DO PLANO

Sistema de Projecção: HAYFORD GAUSS
 Elipsóide: INTERNACIONAL
 Datum: 73 (MELRIÇA)
 Sistema de Coordenadas: RECTANGULARES
 Fonte: TECTA

Escala: 1/200

Data: SETEMBRO 2010

